

# Transport Layer

application

transport

network

link

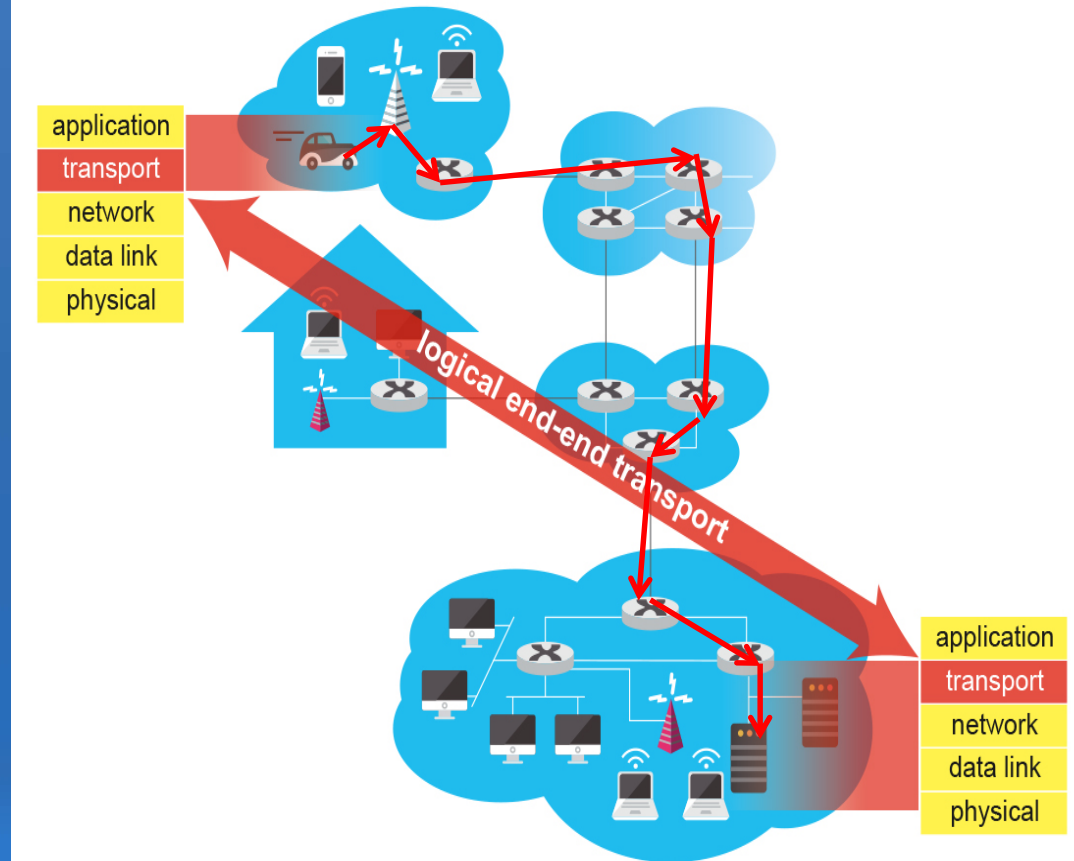
physical

Logical Communication between  
Processes

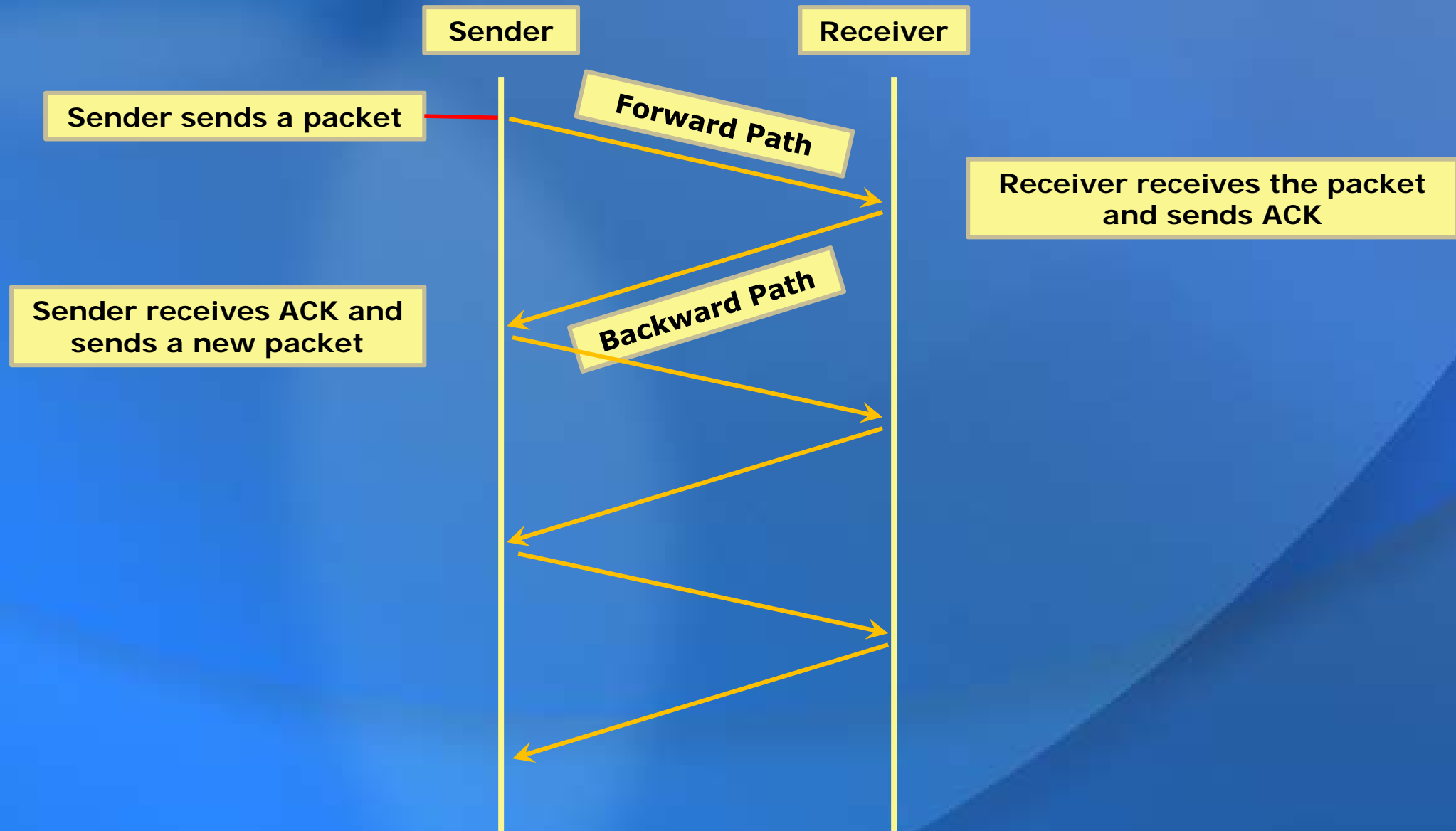
Forwarding & Routing

Data Transfer Between Neighbors

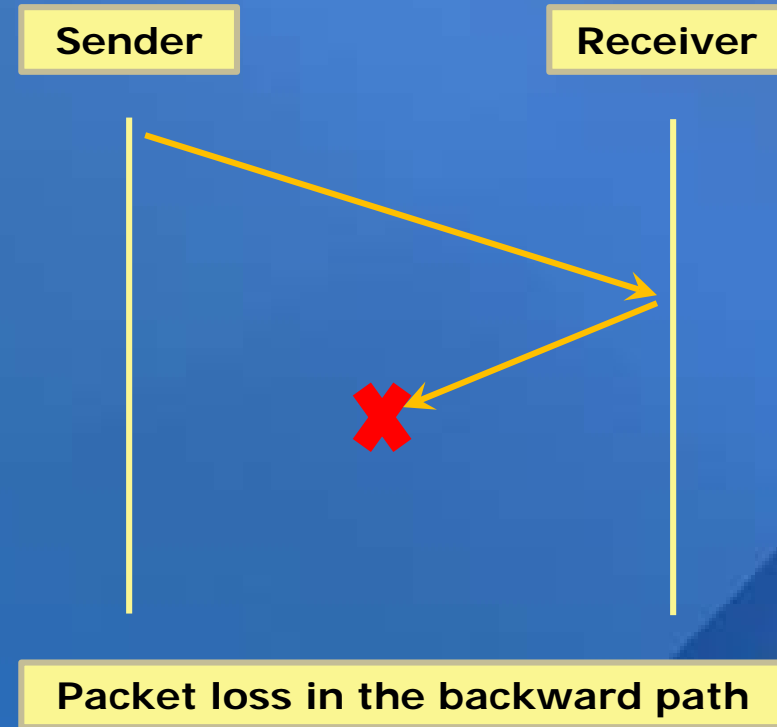
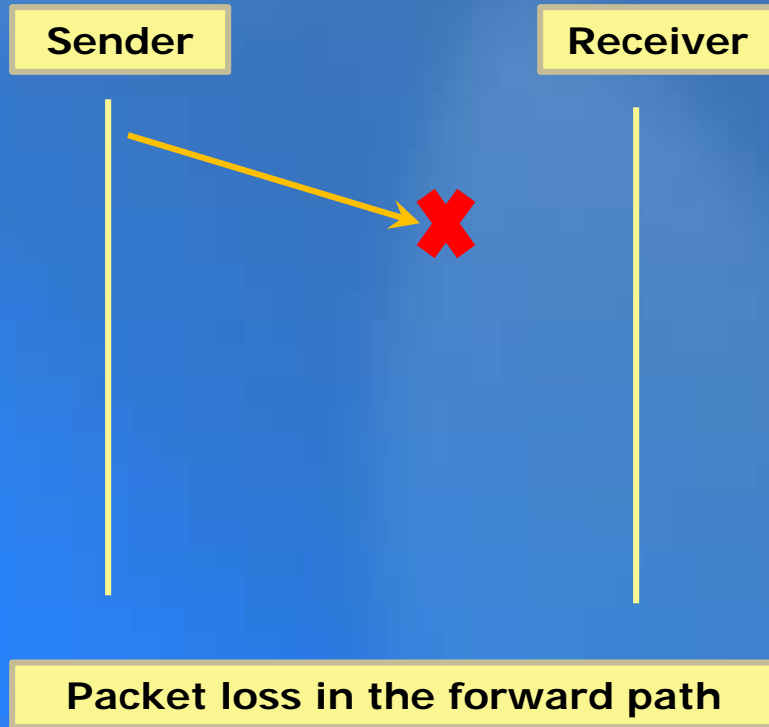
Bits "On The Wire"



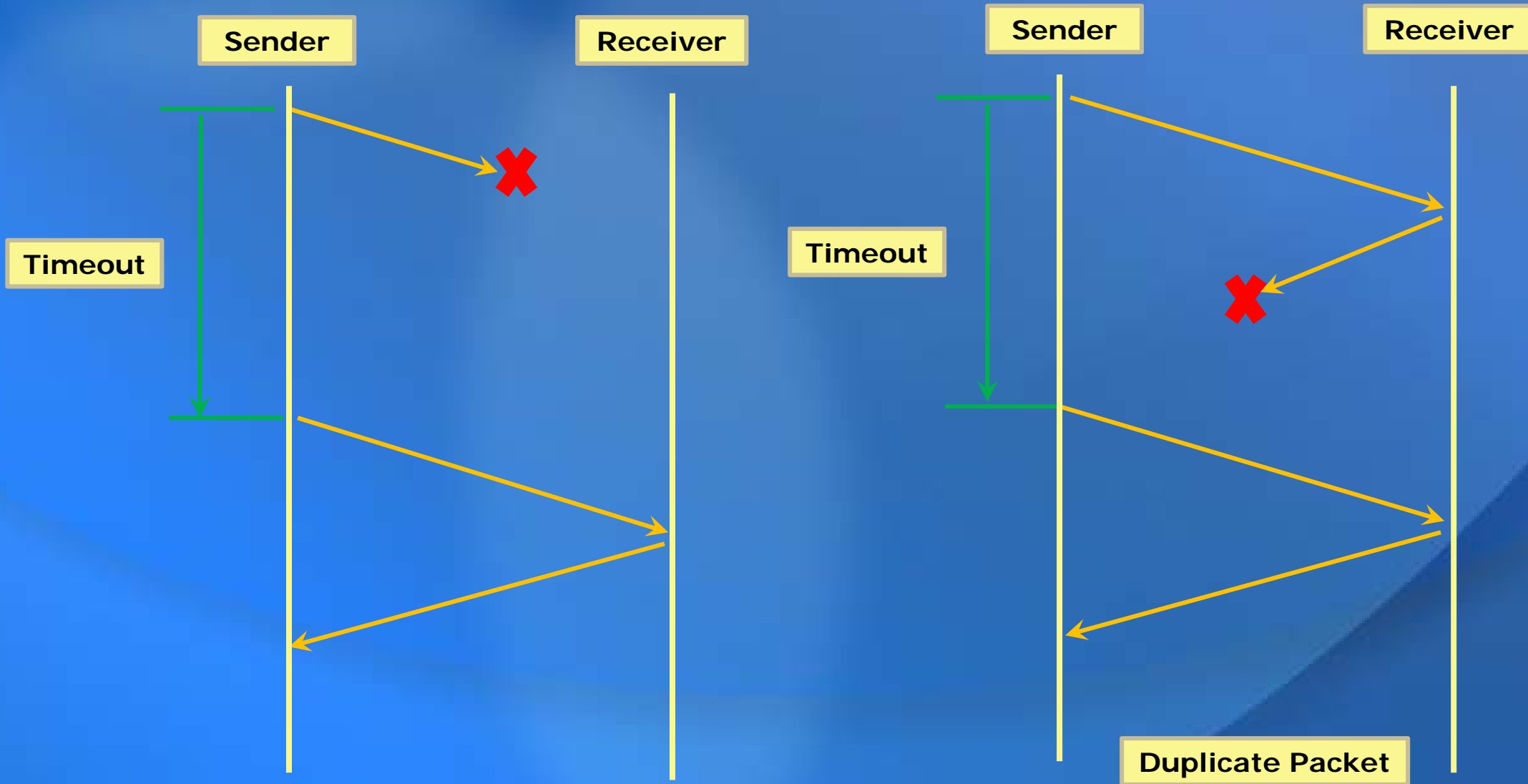
# Stop-and-Wait Protocol



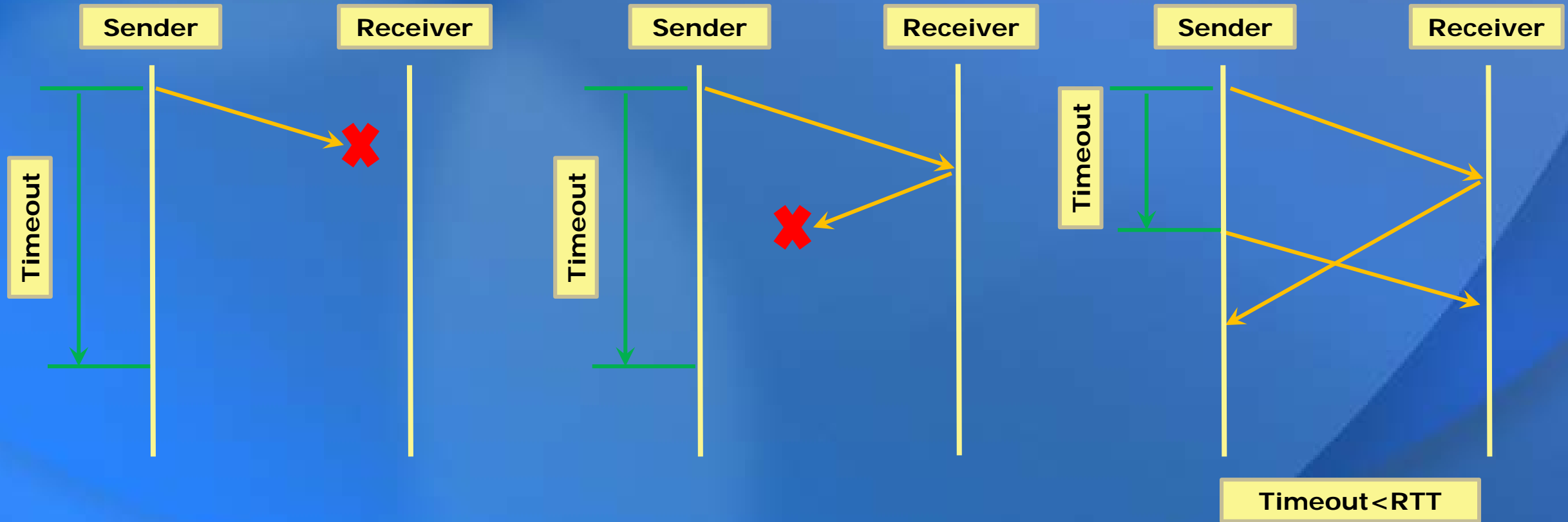
# Packet Loss due to Link Reliability



# Time-Out and Retransmission



# Effect of Timeout on Throughput



Selection of Timeout: a Tradeoff

1. Too large: unnecessary waiting for lost packets (Throughput)
2. Too small: unnecessary retransmissions (Energy)